



# DIGIGAS<sup>®</sup>

## Smart gas management system

Turn your gas cylinder regulators and manifolds into smart devices that enable you to measure gas contents and provide data on a web-based dashboard. Just screw our smart sensor into your regulator or manifold, plug your repeater into the mains, and Linde Gas will do the rest.

### Why would you want this?

- Access your cylinder contents at your desk or through any web enabled computer
- Save money through ensuring you never run out of gas
- Save time and effort walking round site manually inspecting each cylinder
- Set user notifications (emails and/or SMS) if contents fall below pre-determined levels.
- Serial number and location identification of your regulators and manifolds displayed in one overview.



Smart sensor



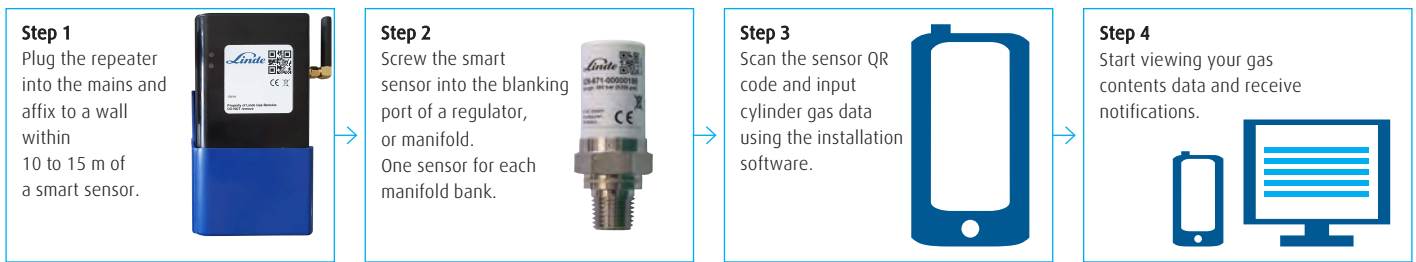
Repeater unit

### What would my dashboard look like?

Notify	Serial Number regulator/ manifold	Location text	Left in %	Right in %	Gas Type	Material Identifier	Cylinder on Bank (Left)	Cylinder on Bank (Right)	Last Change (Left)	Last Change (Right)	Estimated Finish (Left)	Estimated Finish (Right)
1	16 2	Weldshop Manifold 3	98	62 4	Protegon 18	0024-E33	1 5	1	2020/06/06 12:50:21	2020/06/06 12:49:30 6	-	-
	31468	Laboratory	0	88	Argon 5.0	11-W	4	4	2020/05/31 10:18:15	2020/05/31 10:19:57	2019/06/19 16:43:54	2021/09/04 01:54:42
	100003	Gas Storage chemical site	100	32	Liquid Nitrogen	294703-AL	4	4	2020/06/19 15:49:26	2020/06/19 15:42:58	-	2021/06/23 18:00:53
	100005	Gas Store	0	3	Methane	294703-WL	1	1	2019/06/19 11:47:47	2019/06/19 15:37:47	-	-

- 1 Set personal notifications if contents fall below your chosen setpoint.
- 2 Free text to add your regulator/manifold serial number.
- 3 Add the location of your regulator/manifold.
- 4 See your contents percentage in both banks of your manifold or regulator (just one of these contents shown if installed on regulator) along with gas type and Linde material code.
- 5 How many cylinders you have in each bank if sensor is fitted on a manifold.
- 6 When using on a manifold it even tells you when you switched banks sides over and based on current usage when it estimates each bank side will run out.

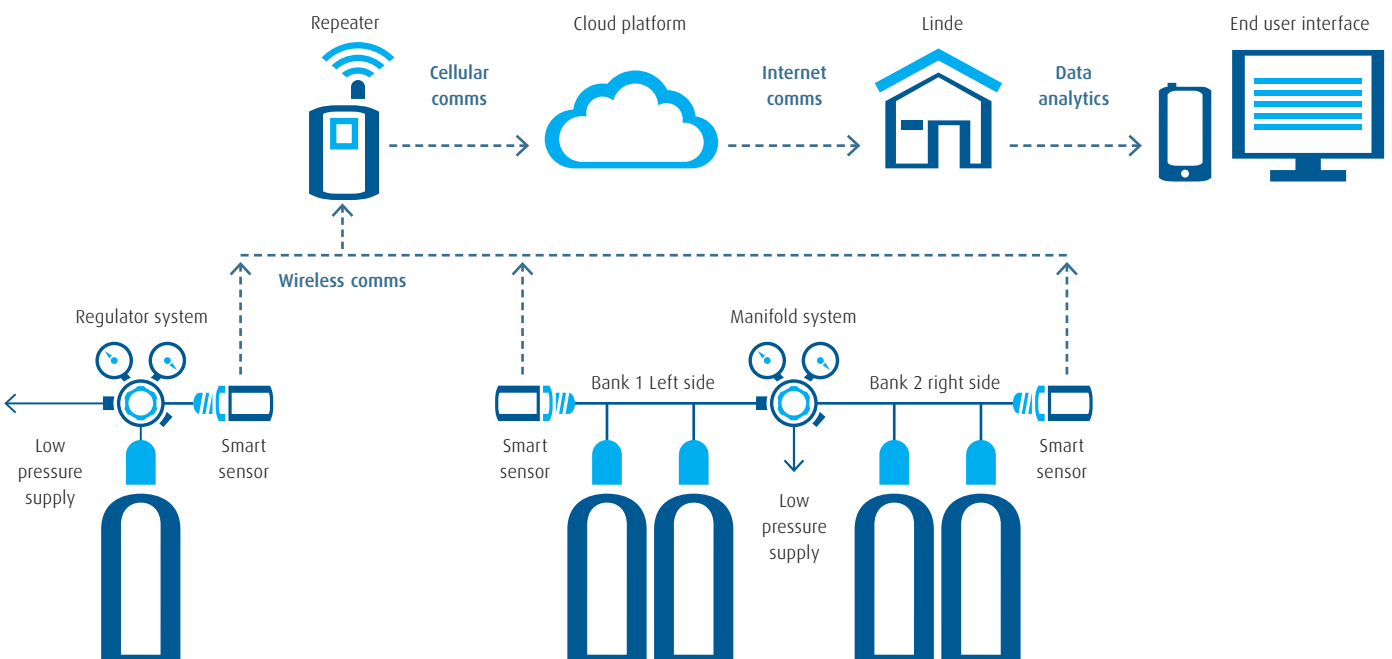
## Four easy steps to digitalise and make your cylinders smart



### How can I get it?

Please contact [aanvraag@linde.com](mailto:aanvraag@linde.com), your account manager or our main customer service line on 088 262 62 12 and one of our trained team will contact you to discuss the system with you in more detail and further possibilities.

### Schematic of entire DIGIGAS system



Linde Gas Benelux B.V.  
Havenstraat 23, 3115 HC Schiedam, the Netherlands  
Tel. 088 262 62 12, e-mail: [aanvraag@linde.com](mailto:aanvraag@linde.com), [www.linde-gas.nl](http://www.linde-gas.nl)