

From April 1 to 30, 2024



PROMOTION A CUT ABOVE

CUT-OFF WHEELS - CUTTING TOOLS - MAG DRILLS



**FREE WALTER
SST™ IMPACT
DRIVER BIT SET***



SCAN ME
TO REDEEM ▶



*Offer applies to select products.
See back cover for more details.

Get more cuts per wheel and more holes per tool with WALTER's solutions

PICK UP OUR TOOLING SOLUTIONS SWEEPSTAKES

**YOU COULD WIN
A 2024 F-150 TREMOR
FOR A 2-YEAR LEASE
+ MANY OTHER PRIZES**



DETAILS ON BACK ▶

CUTTING



SERIES: 10A, 10B, 10C, 10H, 10L, 10P, 10Q, 10W, 11A, 11D, 11F, 11H, 11L, 11T, 11U, 11V, 11W, 11X

NEW

ZIP™ XX

Ceramic cut-off wheel for exceptional life and faster cuts



Dia.	Thick.	Arbor	Order No.
TYPE 1			
4 1/2"	1/16"	7/8"	WAL11X242
5"	1/16"	7/8"	WAL11X252
6"	1/16"	7/8"	WAL11X262
7"	5/64"	7/8"	WAL11X272

EXPERIENCE FASTER, SMOOTHER & SAFER CUTTING

- ▶ 100% self-sharpening ceramic grains
- ▶ SMART RESIN™ Technology exposes fresh grains at the optimal time to optimize the balance between sharpness & life
- ▶ Premium reinforcement and improved wheel density exceed the highest industry safety standards
- ▶ At least 30% more cuts than competitive ceramic wheels resulting in maximum productivity and reduced change outs

ZIP+ XTRA™

Performance cutting in thicker metal



Dia.	Thick.	Arbor	Order No.
TYPE 1			
4 1/2"	1/16"	7/8"	WAL11T242
5"	1/16"	7/8"	WAL11T252
6"	1/16"	7/8"	WAL11T262
7"	5/64"	7/8"	WAL11T272
9"	3/32"	7/8"	WAL11T292
TYPE 27			
4 1/2"	1/16"	7/8"	WAL11T453
5"	1/16"	7/8"	WAL11T503
6"	1/16"	7/8"	WAL11T603

ZIPCUT™

Safe, fast and reliable cutting



Dia.	Thick.	Arbor	Order No.
TYPE 1			
4 1/2"	3/64"	7/8"	WAL11T042
5"	3/64"	7/8"	WAL11T052
6"	3/64"	7/8"	WAL11T062
7"	1/16"	7/8"	WAL11T072
*9"	5/64"	7/8"	WAL11T092
TYPE 27			
4 1/2"	3/64"	7/8"	WAL11T142
5"	3/64"	7/8"	WAL11T152
6"	3/64"	7/8"	WAL11T162
7"	1/16"	7/8"	WAL11T172
9"	3/64"	7/8"	WAL11T192

*Must be used with 3" clamping flange No. 30-B 022 (according to ANSI B7.1)
Also available for circular saws (Type 1) and in Spin-On version (Type 27S). See product list.

ZIP STAINLESS™

Contaminant-free wheel for use on stainless steel



Dia.	Thick.	Arbor	Order No.
TYPE 1			
4 1/2"	3/64"	7/8"	WAL11F042
5"	3/64"	7/8"	WAL11F052
6"	3/64"	7/8"	WAL11F062
7"	1/16"	7/8"	WAL11F072
*9"	5/64"	7/8"	WAL11F092

*Must be used with 3" clamping flange No. 30-B 022 (according to ANSI B7.1)
Type 27 also available. See product list.

ZIP™

Performance cutting with straight shaft and die grinder



Dia.	Thick.	Arbor	Order No.
TYPE 1			
3"	1/32"	3/8"	WAL11L303
3"	1/16"	3/8"	WAL11L313
4"	1/32"	3/8"	WAL11L403
4"	1/16"	3/8"	WAL11L413

ZIP ALU™

Fast & free cutting on aluminum & other non-ferrous metals



Dia.	Thick.	Arbor	Order No.
TYPE 1			
4 1/2"	3/64"	7/8"	WAL11U042
5"	3/64"	7/8"	WAL11U052
6"	3/64"	7/8"	WAL11U062
7"	1/16"	7/8"	WAL11U072

Type 27 also available. See product list.

COMBO ZIP™

Heavily reinforced for extra operator safety



Dia.	Thick.	Arbor	Order No.
TYPE 27			
4 1/2"	5/64"	7/8"	WAL11T842
5"	5/64"	7/8"	WAL11T852
6"	5/64"	7/8"	WAL11T862

ZIP ONE™

For quick and safe cutting on thin gauge steel or stainless steel



Dia.	Thick.	Arbor	Order No.
TYPE 1			
4 1/2"	1/32"	7/8"	WAL11T542
5"	1/32"	7/8"	WAL11T552

Type 27 also available. See product list.



WALTER's exclusive SMART RESIN™ technology exposes fresh ceramic grains at the optimal time to achieve the most productive balance between sharpness & life in your application. SMART RESIN™ technology elevates our ceramic cut-off wheels to a new level of performance.

Additional products and sizes available, consult the listing for full details or contact your local Linde Canada Inc. store for information.

LARGE DIAMETER CUTTING SOLUTIONS



PORTABLE CHOP SAWS

Series: 10H, 10L, 10P, 10Q, 10W

CHOPCUT - General purpose for steel and stainless

CHOPCUT II - High performance for steel and stainless

CHOPCUT ALU - For aluminum

CHOPCUT TITAN - Titanium, ductile, brass and cast iron

ALLSTEEL - Economical choice for steel and stainless

STATIONARY SAWS

Series: 10A, 10B, 10C

RIPCUT - General purpose for steel and stainless

RIPCUT II - High performance for steel

RIPCUT STAINLESS - For stainless

GAS & ELECTRIC POWER SAWS

Series: 11A, 11D, 11W

PORTACUT - For steel and stainless

PORTACUT - For plastic, concrete and ductile

ALLSTEEL - Economical choice for steel and stainless

WHEELS FOR CUTTING RAIL

Series: 11V

RAILCUT II - For fast cutting on all types of rail without glazing

Contact your local WALTER Territory Manager for more information.

TOOLING



= Drillco



= WALTER



= Triumph

DRILLS



WALTER

Series 01A, 01B, 01C, 01D, 01M

DRILLCO CUTTING TOOLS

Series 300N, 350N, 400N, **NEW** 410N, 440N, 480N, **NEW** 490N, 1000A, 1000F, 1000N, 8950

TRIUMPH TWIST DRILL

Series BP1HD, BP1HD+, T1HD, T1HD+

DRILL SETS



WALTER

Series 01E

DRILLCO CUTTING TOOLS

Series 300N, 350N, 400N, **NEW** 410N

TRIUMPH TWIST DRILL

Series T17HD, T17HD+, T17HDCC, T17HD-DC+

TAPS



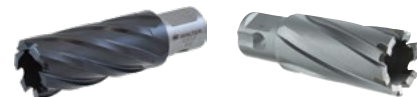
WALTER

Series 03A, 03B

DRILLCO CUTTING TOOLS

Series 2000, 2000E, 2000N, 2800, 2800E, 2900, Sets

ANNULAR CUTTERS



WALTER

Series 05A, 05B, 05D, 05E, 05F, 05H

DRILLCO CUTTING TOOLS

Series 4275N, 4285N, 4290N, 4700SE, 125SF

CARBIDE BURRS



WALTER

Series 01V

DRILLCO CUTTING TOOLS

Series 7000 and sets

HOLE CUTTERS & REAMERS



DRILLCO CUTTING TOOLS

Series 9500CT, 9600CT



DRILLCO CUTTING TOOLS

Series 4275N, 4285N, 4290N, 4700SE

Additional products and sizes available, consult the listing for full details or contact your local Linde Canada Inc. store for information.

MAGNETIC DRILLS

Series: LIMITED ITEMS FROM 39D

WALTER's magnetic drills stand out as reliable and versatile workhorses, featuring a compact design for easy portability. The magnetized safety switch ensures safe operation, contributing to improved operator safety and reduced production costs.

Part Number	Description
WAL39D050	ICECUT MINI™ Ultimate compact, low-profile magnetic drilling unit for making holes in tight spaces.
WAL39D100	ICECUT 100™ Compact – extra lightweight – perfect when mobility is key.
WAL39D200	ICECUT 200™ Powerful – 2-speed – yet only 27 lbs – ideal for a wide range of production or job site operations.
WAL39D201	ICECUT 200PM™ Drill unit with permanent magnet base for maximum safety on worksites.
WAL39D250	ICECUT 250™ Powerful, intuitive and lightweight. Built with Dynamax™ control for smooth drilling and reversible speed for tapping holes.
WAL39D251	ICECUT 250P™ Powerful, versatile and uniquely designed with permanent pivoting magnets for safety and convenience on pipe-related jobs.
WAL39D252	ICECUT 250 AUTO™ Powerful Magnetic Drilling machine with automatic feed for maximum consistency & efficiency.
WAL39D300	ICECUT 300™ With a swivel base and electronic speed control, allows you to drill safer and faster.
WAL39D400	ICECUT 400™ With 4 mechanically-controlled speeds and wider RPM range, this powerful tool can tackle any drilling operation with ease.

**YOU COULD WIN
A 2024 F-150 TREMOR
FOR A 2-YEAR LEASE
+ MANY OTHER PRIZES**



**PICK UP OUR TOOLING SOLUTIONS
SWEEPSTAKES**



Scan here for details

Visit [WALTER.com/pickupourtools](https://www.walter.com/pickupourtools) to participate & for complete contest details, secondary prize schedule, rules & regs. Open only to US and Canadian legal residents who have reached the age of majority. Valid driver's license required. Get unique code on specially marked packs. No purchase necessary. One entry per valid unique code. While quantities last. To be won: 1 grand prize (24 month lease of a 2024 Ford F-150 Tremor edition or cash value of 25,000 USD / 35,000 CAD) & 16 secondary prizes (WALTER products). Approximate secondary prize value: 250 USD / 325 CAD each. Contest ends November 30th 2024. Grand prize winning code will be randomly selected amongst valid entries on Dec 9th 2024. Skill-testing question required. Odds of winning depend upon the number of eligible entries received. Limit of one prize per valid code.



**REDEEM ONLINE FOR
A FREE WALTER SST™
IMPACT DRIVER
BIT SET***

With the purchase of \$300 of tooling or mag drills included in the promotion.

SCAN ME
TO REDEEM



*Offer applied to select products, while supplies last. Available at participating Linde locations in Canada.

Available at:



1-800-225-8247 www.LindeCanada.ca/stores