



## Lincoln Electric® Cooper™ Welding Cobots



### Collaborative Robot Welding Solution

The Lincoln Electric COOPER Cobot robotic welding system features simplified programming with the new tablet-based teach pendant and the ability to teach at the torch. Simply move the cobot's arm with your hand to the weld start and finish. These cobot welding systems are built for the industrial space and has access to Lincoln Electric's highest productivity weld programs allowing you to maximize productivity.

#### Ideal For:

- High-mix job shops
- Repair and remanufacturing
- Part resurfacing and reconditioning
- Roof and bridge trusses
- Mechanical contractors and pipe shops
- Agricultural equipment
- Steel fabricators and metal service centers
- Training and educational programs

**The COOPER Cobot robotic welding system easily moves to parts that need to be welded and can be safely operated in tandem with your production staff.**

#### What's Included:

- FANUC® CRX with tablet based TP or ABB® GoFa collaborative arc welding robot arm with robust controller
- AutoDrive® 4R100 wire feeder (air cooled) or AutoDrive 4R220 wire feeder (water cooled)
- Power Wave® R450 welder
- Fixed welding table (on options with cart)
- Heavy duty casters (on options with cart)
- Stabilizing kickstand (on options with cart)
- The Cooper™ App
- CSA approval for Canada

#### System Options:

- Wire reel assembly kit
- Modular tooling table and components (on options with cart)
- Mag-switch base for multiple mounting options (on options with cart)
- Integrated fume extraction (on options with cart)
- JumpStart onsite startup package – 2-day coaching and prep session with cobot subject matter expert

**Benefits: Increase Productivity**

- Increase productivity with a collaborative robot system that your operators can work alongside with

**Simplified Programming**

- The simplified, icon-based programming is designed for straightforward, user-friendly operation

**Teach At The Torch**

- Designed for an operator at any level of experience with robotics, the COOPER Cobot system allows for teaching at the torch

**Flexible Work Zone**

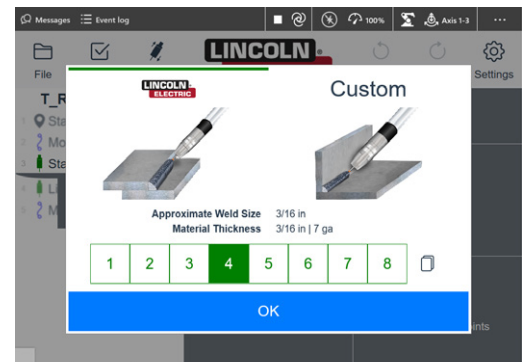
- The adaptable and easy to move system allows you to bring the cobot to every part. Providing greater flexibility and more freedom to automate your welding throughout your facility

**Small Footprint**

- Mobile, flexible system with small footprint on the shop floor

**Touch Panel Tablet Teach Pendant**

- The Cooper™ App will help you quickly program and produce quality welds. On-screen steps guide users through the weld programming process easily. Whether your fabrication requires a standard single-pass liner weld or structural steel multi-pass welds, the Cooper™ App can help.

**Lincoln Arc Welding Plug-In**

- Receives input directly from pushbuttons at the integrated torch, automatically recording points on the timeline
- Operator can clearly see specific arc start/end points on timeline and “tap” to change weld parameters

Part#	Model	Dimensions mm (in)	Robotic Arm Payload kg (lb)	Robotic Arm Reach mm (in)	System Weight kg (lb)	Fixed Table Work Envelope mm (in)	Fixed Table Payload kg (lb)
<b>Air Cooled</b>							
LINAD2489-8	Cooper CRX-10iA/L air cooled welding cobot cart	1,752.6 x 889 x 2,032 (69 x 35 x 80)	10 (22)	1,418 (55.8)	407 (895)	1,117.6 x 889 (44 x 35)	226 (500)
LINAD2489-6	Cooper CRX-25iA air cooled welding cobot cart	1,752.6 x 1,174 x 2,662 (69 x 46 x 105)	25 (55)	1,889 (74.4)	905 (1,995)	N/A	N/A
LINAD2501-1	Cooper 15000 GoFa air cooled cobot cart	1,752.6 x 889 x 2,032 (69 x 35 x 80)	5 (11)	950 (37.4)	475 (1,047.2)	1,117.6 x 889 (44 x 35)	226 (500)
<b>Water Cooled</b>							
LINAD2489-10	Cooper CRX-10iA/L water cooled welding cobot cart	1,752.6 x 889 x 2,032 (69 x 35 x 80)	10 (22)	1,418 (55.8)	522 (1,150)	1,117.6 x 889 (44 x 35)	226 (500)
LINAD2489-7	Cooper CRX-25iA water cooled welding cobot cart	1,752.6 x 1,174 x 2,662 (69 x 46 x 105)	25 (55)	1,889 (74.4)	1,005 (2,216)	N/A	N/A
<b>Aluminum</b>							
LINAD2489-14	Cooper CRX-10iA/L aluminum welding cobot cart	1,752.6 x 889 x 2,032 (69 x 35 x 80)	10 (22)	1,418 (55.8)	531 (1,170)	1,117.6 x 889 (44 x 35)	226 (500)
LINAD2489-16	Cooper CRX-25iA aluminum welding cobot cart	1,752.6 x 1,174 x 2,662 (69 x 46 x 105)	25 (55)	1,889 (74.4)	1,005 (2,216)	N/A	N/A

**Contact Linde Today:**

For more information, contact us: [automation.support@linde.com](mailto:automation.support@linde.com).

**Linde Canada Inc.**

5015 Spectrum Way, Suite 500, Mississauga, ON L4W 0E4

Phone 1-800-225-8247, [www.lindecanada.ca](http://www.lindecanada.ca)